

**Manufacturer & stockist: Stainless Steel Entire Range of Pipe Line Fittings & Flanges.**



**P.S. STEEL**

**PS Steel SHOP NO. 58, FIRST FLOOR,  
RAGHUSHREE MARKET, AJMERI GATE  
Delhi 110006**



**+91-9819688259, +91-9899412628**



**p.s.steel999@gmail.com**



## Company Profile

P.S.STEEL is a premier supplier specializing in high-quality stainless steel products. Established in Delhi, India with the vision of providing unparalleled service and premium products, we have emerged as a trusted name in the stainless steel industry. Our commitment to excellence and customer satisfaction has made us a preferred partner for clients across various sectors.

**Who are we:** P.S.Steel is a leading provider of stainless steel solutions, offering an extensive range of products that cater to diverse industrial needs. Our commitment to delivering top-notch products and services has earned us a loyal customer base and a reputation for reliability.

### Product Range:

- **Stainless Steel Pipes:** Our stainless steel pipes are designed to meet the rigorous demands of various industries. Available in multiple grades and specifications, our pipes ensure durability, resistance to corrosion, and superior performance in harsh environments. {Round Pipe, Square Pipe, Rectangular Pipe}
- **Stainless Steel Fittings:** We offer a comprehensive range of stainless steel fittings, including Elbows, Tees, Reducers, Nipples, Bend and more. Our fittings are manufactured to exacting standards, ensuring a perfect fit and reliable performance in piping systems.
- **Stainless Steel Flanges:** P.S.STEEL provides high-quality flanges that ensure robust and leak-proof joints. {Weld Neck Flange, Slip-On Flange, Socket Weld Flange, Lap Joint Flange, Threaded Flange, Blind Flange}
- **Stainless Steel Tubes:** Versatile and reliable tubes for a multitude of uses. (Schedule 5 to XXS Schedule)
- **Stainless Steel Valves:** Durable and efficient valves for controlling fluid and gas flow. (Ball Valve, Gate Valve, Globe Valve, Check Valve, Butterfly Valve, Needle Valve)
- **Mild Steel Pipe Fittings:** Besides our stainless steel offerings, we supply mild steel pipe fittings catering to various industrial applications. {ERW Pipe, Carbon Steel Pipe, GI Pipe, Jindal Steel Pipe, etc}

### Industries We Serve:

Our products are designed to meet the rigorous demands of various industries, including:

- Chemical Processing
- Oil and Gas
- Food Processing
- Pharmaceutical
- Power Generation
- Water Treatment

**Our Commitment:** At P.S.Steel, quality is not just a promise; it is our way of life. We adhere to stringent quality control measures and employ state-of-the-art manufacturing processes to ensure our products are of the highest quality. Our dedicated team of professionals is always ready to provide expert advice and support, ensuring you receive the best solutions tailored to your specific needs.

**Vision:** to be the most trusted and preferred supplier of stainless steel products globally. We aim to achieve this through continuous innovation, exceptional customer service, and an unwavering commitment to quality.

For any inquiries or further information, please do not hesitate to contact us. We look forward to partnering with you and contributing to the success of your projects.

## Contact us:

PS Steel SHOP NO. 58, FIRST FLOOR,  
RAGHUSHREE MARKET, AJMERI GATE  
Delhi 110006



+91-9819688259



p.s.steel999@gmail.com







# FLANGES

We are engaged in manufacturing and exporting wide range of Flanges that are available in variables sizes for applications in waterworks, petrochemicals, refineries, chemical industry and construction works. Owing to its high quality, optimum performance, less maintenance, our range of flanges is appreciated by our clients and its available in various material configurations stainless steel, carbon steel, alloy steel, nickel alloys and copper alloys. Based on the sizes, dimensions, shapes and length of these flanges, we can customize the products for our respected clients and following material of Construction.

- Nickel Alloy
- Stainless Steel & Duplex Steel
- Carbon Steel
- Alloy Steel
- Copper & Brass
- Aluminium

## TYPES

- PLATE BLANK FLANGE
- LAP JOINT FLANGE
- WELDNECK FLANGE
- ORIFACE FLANGE
- LONG WELD NECK FLANGES
- SLIP-ON
- DECK FLANGES
- DRAWING FLANGES
- SCREWED FLANGE
- SOCKETWELD FLANGE
- BLIND FLANGE
- RTJ FLANGE
- THREADED FLANGE
- SPECTACLE
- LARGE RINGS
- REDUCING FLANGES

**Duplex & Super Duplex** : UNS S31803, UNS S32750, UNS S32760.

**Hastelloy Alloy** : ASTM B564 Hastelloy B2, C276, C22.

**Incoloy Alloys** : ASTM B564 Alloy 20, Alloy A286  
Alloy 800H/800HT, Alloy 825.

**Inconel Alloys** : ASTM B564 Alloy 600, Alloy 601,  
Alloy 625, Alloy 718, Alloy 725.

**Monel Alloys** : ASTM B564 Monel 400, Monel K500.

**Stainless Steel** : ASTM A182, F304, 304L, 304H, 316,  
316L, 317, 317L, 321, 310, 347, 904L

**Carbon Steel** : ASTM A105, A694, F42, A350 LF2

**Alloy Steel** : ASTM A182 F1, F5, F9, F11, F22, F91

**Size** : ½"NB TO 72" NB

**Class** : 150#, 300#, 600#, 900#, 1500# & 2500#.

## Standard

ANSI Flanges : 150#, 300#, 600#, 900#, 1500# & 2500#.

AWWA : Class 2B, 2D, 4E, 5E, 6E

DIN : PN6, PN10, PN16, PN25, PN40

JIS : 5K, 10K

BS : Table D, E, F.



**PS Steel SHOP NO. 58, FIRST FLOOR,  
RAGHUSHREE MARKET, AJMERI GATE  
Delhi 110006**



**+91-9819688259, +91-9899412628**



# BUTTWELD FITTINGS

We are engaged in manufacturing and exporting wide range of Butt Weld Fitting that is available in varied types & grades sourced from reliable vendors, these fittings are highly acknowledged for their high tensile strength, durability and accurate alloy composition. These find application in several industries such oil & gas, automobile, acid & chemical, pharmaceutical and cement industries. We are known for our butt weld fittings.

## TYPES OF BUTTWELD FITTINGS

- TEE (EQUAL / UNEQUAL)
- REDUCING TEE
- SHORT STUB BEND
- RETURN BENDS
- CAP
- ELBOW (1D/1.5D/3D/5D)
- LONG STUB BEND
- REDUCER  
(CONCENTRIC/ECCENTRIC)
- MITER BENDS

**Duplex & Super Duplex :** UNS S31803, UNS S32750, UNS S32760.

**Hastelloy Alloy :** ASTM B366 Hastelloy B2, Hastelloy C276, Hastelloy C22.

**Incoloy Alloys :** ASTM B366 Alloy 20, Alloy 800H/800HT, Alloy 825, Alloy 286

**Inconel Alloys :** ASTM B366 Alloy 600, Alloy 601, Alloy 625, Alloy 718, Alloy 725.

**Monel Alloys :** ASTM B366 Monel 400, Monel K500.

**Copper Brass :** CuNi 90 : 10 & 70 : 30

**Stainless Steel :** ASTM A403, WP304, 304L, 304H, 316, 316L, 317, 317L, 321, 310, 347, 904L

**Carbon Steel :** ASTM A234 WPB, A420 WPL3, A420 WPL6, MSS-SP-75 WPHY 42/46/52

**Alloy Steel :** ASTM A234 WP1, WP5, WP9, WP11, WP22

**Size :** 1/4" NB TO 24" NB (Seamless)  
4" NB TO 72" NB (Welded)

**Wall Thickness :** Sch. 5S To Sch. XXS



[p.s.steel999@gmail.com](mailto:p.s.steel999@gmail.com)



**PS Steel SHOP NO. 58, FIRST FLOOR,  
RAGHUSHREE MARKET, AJMERI GATE  
Delhi 110006**



[www.pssteel.co.in](http://www.pssteel.co.in)



**+91-9819688259, +91-9899412628**





## FORGED FITTINGS

We offer to our clients specially designed forged pipe fittings. We also undertake new projects as per the drawings and specifications of the client for forged fittings. The product is delivered in a short time frame. We offer special forged pipes fittings in different metals which find application in various industries. We can offer forged fittings in following materials of construction :-

- Nickel Alloy & Copper Nickel Alloy
- Stainless Steel & Duplex Steel
- Carbon Steel & Alloy Steel

**Types :** Elbow, Tee, Union, Cross, Coup Bushing, Plug, Swage Nipple, Welding Boss, Hexagon Nipple, Barrel Nipple, Welding Nipple, Parraler Nipple, Street Elbow, Hexagon Nut, Hose Nipple, Bend, Adapter, Insert, Weldolet, Elbowlet, Sockolet, Thredolet, Nipolet, Letrolet etc.

<b>High Nickel</b>	: Monel, Nickel, Inconel, Hastelloy
<b>Stainless Steel</b>	: ASTM A182, F304, 304L, 304H, 316, 316L, 317, 317L, 321, 310, 347, 904L
<b>Carbon Steel</b>	: ASTM A105, A694, F42, A350 LF2
<b>Alloy Steel</b>	: ASTM A182, F1, F5, F9, F11, F22, F91
<b>Size</b>	: 1/4: NB TO 4" NB
<b>Class</b>	: 2000#, 3000#, 6000#, 9000#



[p.s.steel999@gmail.com](mailto:p.s.steel999@gmail.com)



[www.pssteel.co.in](http://www.pssteel.co.in)



PS Steel SHOP NO. 58, FIRST FLOOR,  
RAGHUSHREE MARKET, AJMERI GATE  
Delhi 110006



+91-9819688259, +91-9899412628



## FASTENERS

We hold expertise in offering fasteners, such as nuts, bolts, washers, anchor fasteners, stud bolts, Threaded Rod to clients. These material available in grade, such as Stainless Steel, Carbon Steel, Duplex Steel, Monel, Inconel, Hastelloy, Titanium and Nickel Alloy, Wich Alloy Steel assure their high tensile strength and corrosion resistance. Our range finds applications in numerous industries and is offered in sizes ranging from M4 TO M100, length up to 5 meters as per the client's requirements.

**Duplex & Super Duplex :** 347, 310, 303, 304/304H, 316/316L, 317/317L, 17/4PH, 410, 431, Nitronic 50, Nitronic 60, Nitronic 80A

**Carbon Steel :** 4.6, 8.8, 10.9, 12.9.

**Duplex & Super Duplex :** UNS S31803, UNS S32750, UNS S32760, UNS S3250, 254 SMO

**Hastelloy Alloy :** Hastelloy C4, Hastelloy B2, Hastelloy G30, Hastelloy B3, Hastelloy C276, Hastelloy X, Hastelloy C22

**Incoloy Alloys :** Incoloy Alloy 20, Incoloy Alloy 800, Incoloy Alloy 800H/800HT, Incoloy Alloy 825, Incoloy Alloy 925, Incoloy Alloy A286

**Monel Alloys :** Monel 400, Monel R405, Monel K500.

### TYPES OF FASTENERS

- ANCHOR FASTENERS
- STUB BOLTS
- HEX HEAD BOLTS
- THREADED RODS
- SOCKET CAPS SCREW
- COUNTERSUNK BOLTS
- HEX NUTS
- FLAT / SPRING / LOCK WASHERS
- EYE BOLTS
- FOUNDATION BOLTS
- WASHERS
- REFRACTORY ANCHOR



[p.s.steel999@gmail.com](mailto:p.s.steel999@gmail.com)



[www.pssteel.co.in](http://www.pssteel.co.in)



PS Steel SHOP NO. 58, FIRST FLOOR,  
RAGHUSHREE MARKET, AJMERI GATE  
Delhi 110006



+91-9819688259, +91-9899412628





# INSTRUMENTATION

We hold special expertise in Instrumentation fittings such as single Ferrule, double ferrule in tube & Pipe fittings, Manifold Valves and accessories. Our Fittings find applications in Hydraulic Industries, Oil & Gas, Food & Beverages, Chemical Industries etc. for their excellent quality and durability.

## TYPES

Port Connectors Tube to Flare 37 Degree, Tube to Female Pipe Thread, Female Elbow, Male Connector, Male Elbow, Pipe Union, Reducing Adapter, Tube Union, Union Cross, Union Elbow, Union Tee, Ball Valve, Check Valve, Double Block & Bleed Valve, Gauge Valve, Manifold Valve, Mono Flange Valve, Needle Valve, Plug Valve, Pressure Relief Valve, Vent & Bleeder Valve Gauge Snubber, Air Header, Syphon, Condensate Pot.

<b>Stainless Steel</b>	: A182 304, 304L, 304H, 316, 316L, 316H, 316Ti, 321, 347, 347H, 904L.
<b>Carbon Steel</b>	: A105
<b>Alloy Steel</b>	: A182 F1, F11, F12, F22, F5, F9, F91, F92.
<b>Duplex Steel</b>	: A181 F51, F60, UNS S31803, UNS S2205
<b>Super Duplex Steel</b>	: A182 F44, F53, F55, SMO 254. UNS S31254, UNS S32750, UNS32760.
<b>High Nickel Alloys</b>	: Nickel 200, 201, Monel K 400 & 500. Inconel 600, 601, 625, 800, 825, Hastelloy C276, Alloy 20.
<b>Non Ferrous</b>	: Copper Brass, Phosphor Brass.



[p.s.steel999@gmail.com](mailto:p.s.steel999@gmail.com)



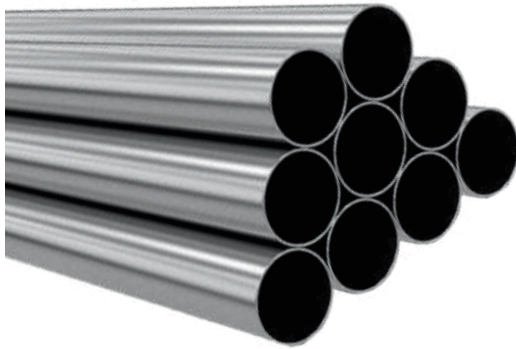
[www.pssteel.co.in](http://www.pssteel.co.in)



PS Steel SHOP NO. 58, FIRST FLOOR,  
RAGHUSHREE MARKET, AJMERI GATE  
Delhi 110006



+91-9819688259, +91-9899412628



## PIPES & TUBES

We are one of the most trusted Stockist for offering finest range of Stainless Steel, Duplex Steel, Carbon Steel & Alloy Steel Pipes. Used in different industries for diverse applications. these pipes can be available in standard as well as customized dimensions as per the requirement of the clients. These pipes are appreciated for their sturdy and precise construction. We are known for offering our product range at reasonable prices and delivering consignment given time frame.

### Types

Round	Rectangle
Square	Hydraulic



### Stainless Steel

ASTM / ASME SA 312 GR. TP 304, 304L, 304H, 309S, 309H, 310S, 310H, 316, 316Ti, 316H, 316LN, 317, 317L, 321, 321H, 347, 347H, 904L.

### Duplex Steel

ASTM / ASME SA 790 UNS NO : 31803 / 32760.

### Carbon Steel

ASTM / ASME A53 GR. A & B, ASTM A 106 GR. A, B & C, API 5L GR. B, API 5L X42, X46, X52, X60, X65 & X70. ASTM / ASME A691 GR. A, B & C.

### Alloy Steel

ASTM / ASME A 335 GR P1, P5, P9, P11, P22, P23, P91.

### Cupro Nickel

70 : 30 & 90 : 10

### Aluminium Alloys

2014, 2024, 5052, 5083, 5086, 6061, 6063, 6082, 6351, 7075.

### Nickel Alloy

ASTM / ASME SB 161/B725/B730 UNS 2200 (NICKEL 200 & 201)

ASTM / ASME SB 165/B725/B730 UNS 2200 (MONEL 400 & 500)

ASTM / ASME SB 729/B464/B468 UNS 8020 (ALLOYED / 20CB 3)

ASTM / ASME SB 423/B705/B704 UNS 8825 (INCONEL 825)

ASTM / ASME SB 167/B517/B516 UNS 6600 (INCONEL 600)

ASTM / ASME SB 444/B705/B704 UNS 6625 (INCONEL 625)

ASTM / ASME SB 622/B619/B622 UNS 10276 (HASTELLOY C276)



[p.s.steel999@gmail.com](mailto:p.s.steel999@gmail.com)



[www.pssteel.co.in](http://www.pssteel.co.in)

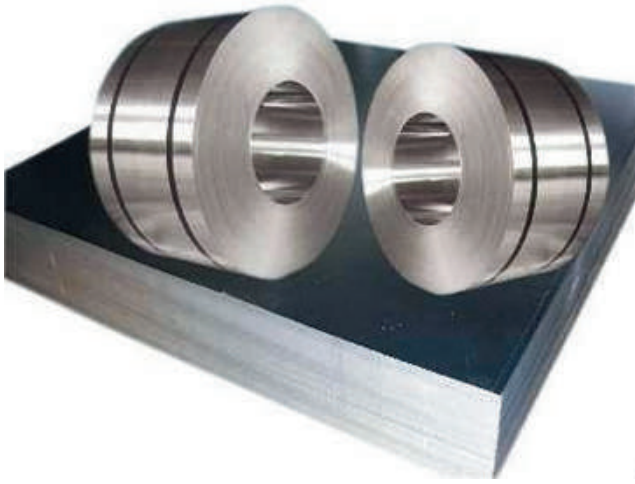


PS Steel SHOP NO. 58, FIRST FLOOR,  
RAGHUSHREE MARKET, AJMERI GATE  
Delhi 110006



+91-9819688259, +91-9899412628

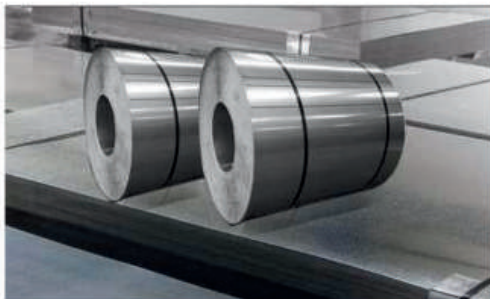




## SHEETS/PLATES/COILS

We have been offering to our clients a vast range of sheets and Coils, that are offered in various specifications to our clients. Catering to the requirements of various industries, Our range is known for its corrosion resistance, durability & high tensile strength.

Our clients can avail from us Plates that are manufactured using high grade stainless steel. These cater to the requirements of various industries and are known for their attributes, such as high tensile strength, corrosion resistance & long life usage. Further, we also have the expertise to customize our range as per the requirements.



**Stainless Steel :** Plates as per ASTM A240, Gr. TP 304, 304L, 304LN, 309, 309S, 309H, 310H, 316, 316L, 316H, 316LN, 316Ti, 317, 317L, 321, 321H, 347, 347H, 409, 410, 420, 430 etc.

**Nickel Alloy :** ASTM / ASME SB 162 UNS 2200 (NICKEL 200), ASTM / ASME SB 162 UNS 2201 (NICKEL 201), ASTM / ASME SB 127 UNS 4400 (MONEL 400), ASTM / ASME SB 463 UNS 8020 (ALLOY 20 / 20 CB 3), ASTM / ASME SB 424 UNS 8825 (INCONEL 825), ASTM / ASME SB 168 UNS 6600 (INCONEL 600), ASTM / ASME SB 409 UNS 8810/8811 (INCONEL 800/800HT), ASTM / ASME SB 443 UNS 6625 (INCONEL 625), ASTM / ASME SB 575 UNS 10276 (HASTELLOY C276)

**Carbon Steel / Boiler-Quality Plates :** As per IS 2062 / ASTM A36, Gr A, B & C, IS 2002 Gr. 1 & 2 ASTM A516 Gr. 60 & 70

**Alloy Steel Plates :** As per ASTM A387 Gr. 2, 9, 11, 12 & 22 in class 1 & 2 ASTM A204 Gr A & B, DIN 17175 Gr. 15Mo3 & 16Mo3 WITH IBR Test Certificate.

**Aluminium Alloys :** 2014, 2024, 5052, 5083, 5086, 6061, 6063, 6082, 6351, 7075

**Range :** 0.5 mm To 200 mm thick in 1000 mm to 3000 mm width & 2500 mm to 12500 mm Length available with NACE MR 01-75



[p.s.steel999@gmail.com](mailto:p.s.steel999@gmail.com)



[www.pssteel.co.in](http://www.pssteel.co.in)



PS Steel SHOP NO. 58, FIRST FLOOR,  
RAGHUSHREE MARKET, AJMERI GATE  
Delhi 110006



+91-9819688259, +91-9899412628



## P.S. STEEL CHEMICAL COMPOSITION

AISI ASTM	C Max	Mn Max	P Max	S Max	Si Max	Cr	Ni	MO	Other Element		
201	0.15	5.50/7.50	0.06	0.030	1.0	16.0/18.0	3.6/5.5	—	N-25max	10Cr-17Mn6Ni4	—
202	0.15	7.50/10.0	0.06	0.030	1.0	17.0/19.0	4.0/6.0	—	N-25max	—	—
301	0.15	2.0max	0.045	0.040	1.0	16.0/18.0	6.0/8.0	—	—	10Cr17Ni17	—
302	0.15	2.0	0.045	0.030	1.0	17.0/19.0	8.0/10.0	—	—	07Cr18Ni19	En-58a
303	0.15	2.0	0.045	—	1.0	17.0/19.0	8.0/10.0	—	—	15Cr18Ni19	En-58M
304	0.08	2.0	0.045	0.030	1.0	18.0/20.0	8.0/10.0	—	—	04Cr18Ni10	En58E
304L	0.030	2.0	0.045	0.030	1.0	18.0/20.0	8.0/10.0	—	—	02Cr18Ni11	—
308	0.08	2.0	0.045	0.030	1.0	10.0/21.0	10.0/12.0	—	—	—	—
309	0.20	2.0MAX	0.045	0.030	1.0	22.0/24.0	12.0/15.0	—	—	20Cr24Ni12	—
309S	0.08	2.0	0.045	0.030	1.0	22.0/24.0	12.0/15.0	—	—	—	—
310	0.25	2.0	0.045	0.030	1.50	24.0/26.0	19.0/22.0	—	—	10Cr25Ni12	—
310S	0.08	2.0	0.045	0.030	1.50	24.0/26.0	19.0/22.0	—	—	—	—
314	0.25	2.0	0.045	0.030	1.5to3	25.0/26.0	19.0/22.0	—	—	—	—
316	0.08	2.0	0.045	0.030	1.0	16.0/18.0	10.0/14.0	2.0/3.0	—	04Cr17Ni12Mo2	En58H
316L	0.030	2.0	0.045	0.030	1.0	16.0/18.0	10.0/14.0	2.0/3.0	—	0cCr17Ni12Mo2	—
317	0.08	2.0	0.045	0.030	1.0	18.0/20.0	11.0/15.0	3.0/4.0	—	—	—
317L	0.030	2.0	0.045	0.030	1.0	18.0/20.0	11.0/15.0	3.0/4.0	—	Ti5cmin	—
316Ti	0.080	2.0	0.045	0.030	1.0	16/18.0	10.0/14.0	2.0/3.0	Ti5xCmin	—	—
321	0.08	2.0	0.045	0.030	1.0	17.0/19.0	9.0/12.0	—	To5xCmin	04Cr18Ni10Ti20	En-58C
430	0.12	1.00	0.040	0.030	0.75	14.0/18.0	0.60	—	—	07Cr17	En-60
446	0.20	1.50max	0.040	0.030	1.0	23.0/27.0	0.60Max	—	N-25max	—	—
403	0.15	1.00	0.040	0.030	0.50	11.5/13.0	0.60	—	—	—	—
410	0.15	1.00	0.040	0.030	1.00	11.5/13.5	0.60	—	—	12Cr13	En-58A
410S	0.08	1.0	0.040	0.030	1.0	11.5/13.5	0.60Max	—	—	—	—
414	0.15	1.0max	0.040	0.030	1.0	11.5/13.5	1.25/2.50	—	—	—	—
420	Over0.15	1.00	0.040	0.030	1.00	12.0/14.0	0.60	—	—	22Cr13-	En-56C&D
431	0.20	1.0max	0.040	0.30	1.0	15.0/17.0	1.25/2.50	0.75max	—	15Cr16Ni2	En-57
440A	0.60/0.70	1.0	0.040	0.030	1.0	16/18	—	—	—	—	—
440B	0.75	1.0	0.040	0.030	1.0	16.0/18.0	—	0.75max	—	—	—
—	0.95	—	—	—	—	—	—	—	—	—	—
440C	0.95	1.0	0.040	0.030	1.0	16/18	0.75max	—	—	—	—
—	1.2	—	—	—	—	—	—	—	—	—	—
446	0.20	1.50	0.40	0.30	1.0	23.0/210	—	—	—	No.25Max	—



[p.s.steel999@gmail.com](mailto:p.s.steel999@gmail.com)



PS Steel SHOP NO. 58, FIRST FLOOR,  
RAGHUSHREE MARKET, AJMERI GATE  
Delhi 110006



[www.pssteel.co.in](http://www.pssteel.co.in)



+91-9819688259, +91-9899412628



## WEIGHTS & THICKNESS OF S.S. PIPE & TUBES BOILERS, HEAT EXCHANGERS

Size	O.D.	10G Wt per Ft.	12G Wt per Ft.	14G Wt per Ft.	16G Wt per Ft.	18G Wt per Ft.	20G Wt per Ft.	22G Wt per Ft.
1/3"	6.35	0.075	0.070	0.065	0.058	0.046	0.037	0.030
5/16"	7.93	0.114	0.105	0.089	0.079	0.060	0.048	0.038
3/8"	9.52	0.152	0.135	0.113	0.097	0.080	0.058	0.046
1/2"	12.7	0.226	0.200	0.157	0.134	0.105	0.079	0.063
3/4"	19.05	0.386	0.326	0.256	0.215	0.161	0.124	0.097
1"	25.4	0.541	0.450	0.351	0.294	0.218	0.167	0.131
1 1/4"	31.82	0.696	0.580	0.448	0.375	0.275	0.200	-
1 1/2"	38.1	0.851	0.700	0.542	0.452	0.332	-	-
1 3/4"	44.45	1.020	0.832	0.646	0.530	0.390	-	-
2"	50.8	1.161	0.960	0.733	0.607	0.447	-	-
2 1/4"	57.15	1.315	1.085	0.828	0.687	0.504	-	-
2 1/2"	63.5	1.472	1.210	0.924	0.792	0.562	-	-
2 3/4"	69.85	1.630	1.338	1.022	0.847	0.619	-	-
3"	76.2	1.782	1.460	1.115	0.924	0.676	-	-
3 1/2"	88.9	2.092	1.718	1.306	1.082	0.791	-	-
4"	101.6	2.403	1.971	1.497	1.239	0.905	-	-
4 1/2"	114.3	2.713	2.224	1.608	1.397	1.020	-	-
5"	127.0	3.023	2.477	1.879	1.554	1.134	-	-
5 1/2"	139.7	3.336	2.730	2.070	1.713	1.250	-	-
6"	152.4	3.654	2.983	2.261	1.875	1.364	-	-
6 1/2"	165.1	3.975	3.256	2.452	2.028	1.478	-	-

## WEIGHTS & WALL THICKNESS OF SCHEDULE PIPES

Nominal Bore	Outside Diameter	SCHEDULE 5		SCHEDULE 10		SCHEDULE 40		SCHEDULE 80		SCHEDULE 160		XX80		XXS	
MM	MM	WT	Weight KG/M	WT	Weight KG/M	WT	Weight KG/M	WT	Weight KG/M	WT	Weight KG/M	WT	Weight KG/M	WT	Weight KG/M
3	10.3	-	-	1.24	0.278	1.73	0.365	2.41	0.469	-	-	2.41	0.469	-	-
6	13.7	-	-	1.65	0.491	2.24	0.633	3.02	0.497	-	-	3.02	0.797	-	-
10	17.2	-	-	1.65	0.631	2.31	0.845	3.20	1.10	-	-	3.20	1.10	-	-
15	21.3	1.65	0.801	2.11	0.999	2.77	1.27	3.75	1.62	4.75	1.94	3.73	1.62	7.47	2.55
20	26.7	1.65	1.02	2.11	1.28	2.87	1.68	3.91	2.20	5.54	2.89	3.91	2.20	7.82	3.63
25	33.4	1.65	1.29	2.77	2.09	3.38	2.50	4.55	3.24	6.35	4.24	4.55	3.24	9.09	5.45
32	42.2	1.65	1.65	2.77	2.69	3.56	3.38	4.85	4.46	6.35	5.61	4.85	4.46	9.70	7.75
40	48.3	1.65	1.90	2.77	3.11	3.68	4.05	5.08	5.41	7.14	7.25	5.08	5.41	10.16	9.54
50	60.3	1.65	3.34	2.77	3.92	3.91	5.44	5.54	7.48	9.41	11.1	5.54	2.28	11.07	13.44
65	73.0	2.11	3.69	3.05	5.26	5.16	8.63	7.01	11.4	9.53	14.9	7.01	11.4	14.2	20.39
80	88.9	2.11	4.51	3.05	6.45	5.49	11.3	7.62	15.3	11.1	21.3	7.62	15.3	15.24	27.65
90	101.6	2.11	5.18	3.05	7.41	5.74	13.6	8.08	18.6	-	-	8.08	18.6	-	-
100	114.3	2.11	5.94	3.05	8.38	6.02	16.1	8.56	22.3	13.8	33.6	8.56	22.3	17.12	40.99
125	141.3	2.77	9.34	3.40	11.6	6.55	21.8	9.53	31.0	-	49.2	9.53	31.0	17.12	57.37
150	168.3	2.77	11.3	3.40	13.8	7.11	29.1	11.0	42.7	18.2	67.8	11.0	42.7	21.95	79.11
200	219.1	2.77	14.8	3.76	20.0	8.18	42.8	12.7	64.6	23.0	111.2	12.7	64.6	22.23	107.8
250	273.0	3.40	22.6	4.19	27.8	8.74	62.3	15.1	96.0	28.6	172.4	15.1	96.0	25.40	155.5
300	323.8	3.96	32.0	4.57	36.17	9.52	72.8	17.45	132.0	33.32	240.0	17.45	132.0	-	-
350	355.6	3.96	34.5	4.78	41.6	11.13	94.49	19.05	158.08	35.71	283.26	19.05	158.08	-	-
400	406.4	4.19	41.78	4.78	47.6	12.7	124.0	21.41	204.4	40.46	367.14	21.41	204.4	-	-
450	457.2	4.19	47.06	4.78	53.625	14.27	156.73	23.8	255.77	45.71	466.4	23.8	255.77	-	-
500	508.0	4.78	59.65	5.54	69.0	15.06	184.08	26.19	312.9	49.99	567.75	26.19	312.9	-	-
600	609.6	5.54	82.98	6.35	94.98	17.45	256.22	30.34	435.8	54.52	811.86	23.34	435.8	-	-



[p.s.steel999@gmail.com](mailto:p.s.steel999@gmail.com)



PS Steel SHOP NO. 58, FIRST FLOOR,  
RAGHUSHREE MARKET, AJMERI GATE  
Delhi 110006

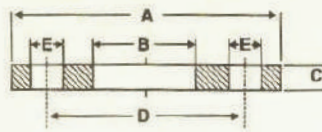


[www.pssteel.co.in](http://www.pssteel.co.in)

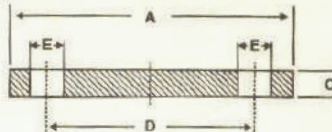


+91-9819688259, +91-9899412628

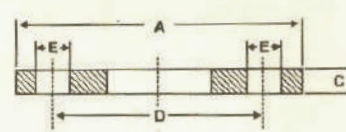




SLIP-ON



BLIND



SCREWED

N.B. Size	Table	Dia. of flange	Bore of Slip-on	Thickness of flange	Pitch circle holes	Dia. of bolt holes	No. of bolts
		A	B	C	D	E	
1/2	D	3 3/4	0.88	3/16	2 5/8	9/16	4
	E	3 3/4	0.88	1/4	2 5/8	9/16	4
	F	3 3/4	0.88	3/8	2 5/8	9/16	4
	H	4 1/2	0.88	1/2	3 1/4	11/16	4
3/4	D	4	1.09	3/16	2 7/8	9/16	4
	E	4	1.09	1/4	2 7/8	9/16	4
	F	4	1.09	3/8	2 7/8	9/16	4
	H	4 1/2	1.09	1/2	3 1/4	11/16	4
1	D	4 1/2	1.36	3/16	3 1/4	9/16	4
	E	4 1/2	1.36	9/32	3 1/4	9/16	4
	F	4 3/4	1.36	3/8	3 7/16	11/16	4
	H	4 3/4	1.36	9/16	3 7/16	11/16	4
1 1/4	D	4 3/4	1.70	1/4	3 7/16	9/16	4
	E	4 3/4	1.70	5/16	3 7/16	9/16	4
	F	5 1/4	1.70	1/2	3 7/8	11/16	4
	H	5 1/4	1.70	11/16	3 7/8	11/16	4
1 1/2	D	5 1/4	1.95	1/4	3 7/8	9/16	4
	E	5 1/4	1.95	11/32	3 7/8	9/16	4
	F	5 1/2	1.95	1/2	4 1/8	11/16	4
	H	5 1/2	1.95	11/16	4 1/8	11/16	4
2	D	6	2.44	5/16	4 1/2	11/16	4
	E	6	2.44	3/8	4 1/2	11/16	4
	F	6 1/2	2.44	5/8	5	11/16	4
	H	6 1/2	2.44	3/4	5	11/16	4
2 1/2	D	6 1/2	2.94	5/16	5	11/16	4
	E	6 1/2	2.94	13/32	5	11/16	4
	F	7 1/4	2.94	5/8	5 3/4	11/16	8
	H	7 1/4	2.94	3/4	5 3/4	11/16	8
3	D	7 1/4	3.57	3/8	5 3/4	11/16	4
	E	7 1/4	3.57	7/16	5 3/4	11/16	4
	F	8	3.57	5/8	6 1/2	11/16	8
	H	8	3.57	7/8	6 1/2	11/16	8
3 1/2	D	8	4.07	3/8	6 1/2	11/16	4
	E	8	4.07	15/32	6 1/2	11/16	8
	F	8 1/2	4.07	3/4	7	11/16	8
	H	8 1/2	4.07	7/8	7	11/16	8
4	D	8 1/2	4.57	3/8	7	11/16	4
	E	8 1/2	4.57	1/2	7	11/16	8
	F	9	4.57	3/4	7 1/2	11/16	8
	H	9	4.57	1	7 1/2	11/16	8
5	D	10	5.66	1/2	8 1/4	11/16	8
	E	10	5.66	9/16	8 1/4	11/16	8
	F	11	5.66	7/8	9 1/4	7/8	8
	H	11	5.66	1 1/8	9 1/4	7/8	8

N.B. Size	Table	Dia. of flange	Bore of Slip-on	Thickness of flange	Pitch circle holes	Dia. of bolt holes	No. of bolts
		A	B	C	D	E	
6	D	11	6.72	1/2	9 1/4	11/16	8
	E	11	6.72	11/16	9 1/4	7/8	8
	F	12	6.72	7/8	10 1/4	7/8	12
	H	12	6.72	1 1/8	10 1/4	7/8	12
8	D	13 1/4	8.72	1/2	11 1/2	11/16	8
	E	13 1/4	8.72	3/4	11 1/2	7/8	8
	F	14 1/4	8.72	1	12 3/4	7/8	12
	H	14 1/4	8.72	1 1/4	12 3/4	7/8	12
10	D	16	10.88	5/8	14	7/8	8
	E	16	10.88	7/8	14	7/8	12
	F	17	10.88	1 1/8	15	1	12
	H	17	10.88	1 3/8	15	1	12
12	D	18	12.88	3/4	16	7/8	12
	E	18	12.88	1	16	1	12
	F	19 1/4	12.88	1 1/4	17 1/4	1	16
	H	19 1/4	12.88	1 5/8	17 1/4	1	16
14	D	20 3/4	14.14	7/8	18 1/2	1	12
	E	20 3/4	14.14	1 1/8	18 1/2	1	12
	F	21 3/4	14.14	1 3/4	19 1/2	1 1/8	16
	H	21 3/4	14.14	1 7/8	19 1/2	1 1/8	16
16	D	22 3/4	16.16	7/8	20 1/2	1	12
	E	22 3/4	16.16	1 1/4	20 1/2	1	12
	F	24	16.16	1 5/8	21 3/4	1 1/8	20
	H	26 1/2	16.16	2 3/4	24	1 1/4	20
18	D	25 1/4	18.18	1	23	1	12
	E	25 1/4	18.18	1 3/8	23	1	16
	F	26 1/2	18.18	1 3/4	24	1 1/4	20
	H	26 1/2	18.18	2 3/8	24	1 1/4	20
20	D	27 3/4	20.20	1 1/8	25 1/4	1	12
	E	27 3/4	20.20	1 1/2	25 1/4	1	16
	F	29	20.20	2	26 1/2	1 1/4	24
	H	29	20.20	2 5/8	26 1/2	1 1/4	24
22	D	30	22.22	1 1/8	27 1/2	1 1/8	16
	E	30	22.22	1 3/4	27 1/2	1 1/8	16
	F	31	22.22	2 1/8	27 1/2	1 1/4	24
	H	31	22.22	2 3/8	27 1/2	1 1/4	24
24	D	32 1/2	24.25	1 1/4	27 1/2	1 1/8	16
	E	32 1/2	24.25	1 7/8	27 1/2	1 1/4	16
	F	33 1/2	24.25	2 1/4	27 1/2	1 3/8	24
	H	33 1/2	24.25	3	27 1/2	1 3/8	24



p.s.steel999@gmail.com



www.pssteel.co.in

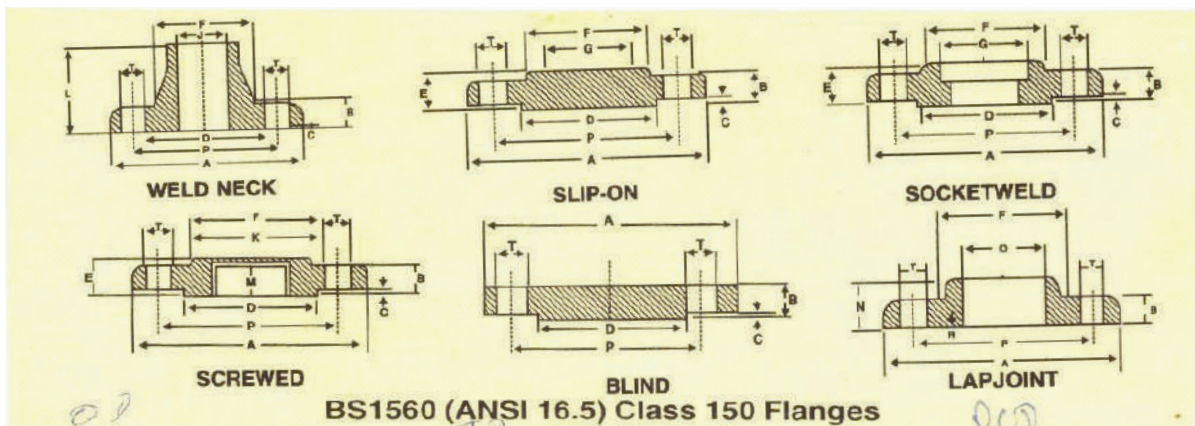


PS Steel SHOP NO. 58, FIRST FLOOR,  
RAGHUSHREE MARKET, AJMERI GATE  
Delhi 110006



+91-9819688259, +91-9899412628





**BS1560 (ANSI 16.5) Class 150 Flanges**

NB	A	B	C	D	E	F	G	H	J	Wt	L	M	N	O	P	R	T	No. of Holes
15	89	11.1	1.6	35	16	30	22.4	9.5	21.3	0.4	48	15	16	23.0	60.3	3.0	15.9	4
20	98	12.7	1.6	43	16	38	27.7	11.0	26.7	0.7	52	16	16	28.0	69.8	3.0	15.9	4
25	108	14.3	1.6	51	17	39	34.5	12.5	33.4	0.8	56	17	17	35.0	79.4	3.0	15.9	4
32	117	15.9	1.6	64	21	59	43.2	14.5	42.2	1.2	57	21	21	43.5	88.9	5.0	15.9	4
40	127	17.5	1.6	73	22	65	49.5	16.0	48.3	1.4	62	22	22	50.0	98.4	6.5	15.9	4
50	152	19.0	1.6	92	25	78	62.0	17.5	60.3	2.2	64	25	25	62.5	120.6	8.0	19.0	4
65	178	22.2	1.6	105	29	90	74.7	19.0	73.0	3.5	70	29	29	75.5	139.7	8.0	19.0	4
80	190	23.8	1.6	127	30	108	90.7	20.5	88.9	4.1	70	30	30	91.5	152.4	9.5	19.0	4
90	216	23.0	1.6	140	32	122	103.4	—	101.6	5.2	71	32	32	104.0	177.0	9.5	19.0	8
100	229	23.8	1.6	157	33	135	116.1	—	114.3	5.6	76	33	33	117.0	190.5	11.0	19.0	8
125	254	23.8	1.6	186	37	164	143.8	—	141.3	6.3	89	37	37	145.0	215.9	11.0	22.2	8
150	279	25.4	1.6	216	40	192	170.7	—	168.3	7.8	89	40	40	171.0	241.3	12.5	22.2	8
200	343	28.6	1.6	270	44	246	221.5	—	219.1	12.6	102	44	44	222.0	298.4	12.5	22.2	8
250	406	30.2	1.6	324	49	305	276.4	—	273.0	18	102	49	49	277.0	362.0	12.5	25.4	12
300	483	31.8	1.6	381	56	365	327.2	—	323.9	27.5	114	56	56	328.0	431.8	12.5	25.4	12
350	533	34.9	1.6	413	57	400	359.2	—	355.6	37	127	57	79	360.0	476.2	12.5	28.6	12
400	597	36.5	1.6	470	64	457	410.5	—	406.4	46	127	64	87	411.0	539.8	12.5	28.6	16
450	635	39.7	1.6	533	68	505	461.8	—	457.2	54	140	68	97	462.0	577.0	12.5	31.8	16
500	698	42.9	1.6	584	73	559	513.1	—	508.0	72	144	73	103	514.0	635.0	12.5	31.8	20
600	813	47.6	1.6	692	83	664	616.0	—	609.6	95	152	83	111	616.0	749.3	12.5	34.9	20

**BS1560 (ANSI 16.5) Class 300 Flanges**

NB	A	B	C	D	E	F	G	H	J	Wt.	L	M	N	O	P	R	T	No. of Holes
15	95	14.3	1.6	35	22	38	22.4	9.5	21.3	0.7	52	16	22	23.0	66.7	3.0	15.9	4
20	117	15.9	1.6	43	25	48	27.7	11.0	26.7	1.2	57	16	25	28.0	82.6	3.0	15.9	4
25	124	17.5	1.6	51	27	54	34.5	12.5	33.4	1.4	62	17	27	35.0	88.9	3.0	15.9	4
32	133	19.0	1.6	64	27	64	43.2	14.5	42.2	1.8	65	21	27	43.5	98.4	5.0	15.9	4
40	156	20.6	1.6	73	30	70	49.5	16.0	48.3	2.7	68	22	30	50.0	114.3	6.5	15.9	4
50	165	22.2	1.6	92	33	84	62.0	17.5	60.3	3.2	70	25	33	62.5	127.0	8.0	19.0	8
65	190	25.4	1.6	105	38	100	74.7	19.0	73.0	4.5	76	29	38	75.5	149.2	8.0	19.0	8
80	210	28.6	1.6	127	43	117	90.7	20.5	88.9	6.1	79	30	43	91.5	168.3	9.5	19.0	8
90	229	30.2	1.6	140	44	133	103.4	—	101.6	7.5	81	32	44	104.0	184.2	9.5	19.0	8
100	254	31.8	1.6	157	48	146	116.1	—	114.3	10	86	33	48	117.0	200.0	11.0	19.0	8
125	279	34.9	1.6	186	51	178	143.8	—	141.3	12.5	98	37	51	145.0	235.0	11.0	22.2	8
150	318	36.5	1.6	216	52	206	170.7	—	168.3	16.2	98	40	52	171.0	269.9	12.5	22.2	12
200	381	41.3	1.6	270	62	260	221.5	—	219.1	25	111	44	62	222.0	330.2	12.5	22.2	12
250	444	47.6	1.6	324	67	321	276.4	—	273.0	35	117	49	95	277.0	387.4	12.5	25.4	16
300	521	50.8	1.6	381	73	375	327.2	—	323.9	50	130	56	102	328.0	450.8	12.5	25.4	16
350	584	54.0	1.6	413	76	425	359.2	—	355.6	72	143	57	111	360.0	514.4	12.5	28.6	20
400	648	57.2	1.6	470	83	483	410.5	—	406.4	90	146	64	121	411.0	571.5	12.5	28.6	20
450	711	60.3	1.6	533	89	533	461.8	—	457.2	115	159	68	130	462.0	628.6	12.5	31.8	24
500	775	63.5	1.6	584	95	587	513.1	—	508.0	137	162	73	140	514.0	685.8	12.5	31.8	24
600	914	69.8	1.6	692	106	702	616.0	—	609.6	210	168	83	152	616.0	812.8	12.5	34.9	2



[p.s.steel999@gmail.com](mailto:p.s.steel999@gmail.com)



PS Steel SHOP NO. 58, FIRST FLOOR,  
RAGHUSHREE MARKET, AJMERI GATE  
Delhi 110006



[www.pssteel.co.in](http://www.pssteel.co.in)



+91-9819688259, +91-9899412628



<div> <div>ELBOWS</div> <div>RETURN BENDS</div> <div>CAPS</div> <div>LAP JOINT STUB ENDS</div> <div>EQUAL TEES</div> <div>CONC AND ECC. REDUCERS</div> <div>SHORT STUBENDS</div> </div>																			
NOM	PIPE	WALL THICKNESS				RADIUS				R					L		H	D	H
BORE inch	O.D.	5S	10S	40S	80S	1D	1.5D	2D	3D	A	B	C	E	G	LONG				
1/2	21.34	1.65	2.11	2.77	3.73	12.7	19.06	25.4	38.1	12.7	15.9	25.4	25.4	34.9	50.8	76.2	50.8	42	8
3/4	26.67	1.65	2.11	2.87	3.91	19.05	28.57	38.10	57.15	19.05	11.1	28.6	25.4	42.8	50.8	76.2	50.8	52	8
1	33.40	1.65	2.77	3.38	4.55	25.4	38.1	50.8	76.2	25.4	22.2	38.1	38.1	50.8	50.8	101.6	50.8	62	10
1 1/4	42.16	1.65	2.77	3.56	4.85	31.75	47.6	63.5	95.25	31.75	25.0	47.6	38.1	63.5	50.8	101.6	50.8	72	12
1 1/2	48.26	1.65	2.77	3.68	5.08	38.1	57.15	76.2	114.3	38.10	28.6	57.2	38.1	73.0	50.8	101.6	63.5	82	12
2	60.32	1.65	2.77	3.91	5.54	50.8	76.2	101.6	152.4	50.8	34.0	63.5	38.1	92.0	63.5	152.4	76.2	98	16
2 1/2	73.02	2.11	3.05	5.16	7.01	63.5	95.25	127.0	190.5	63.5	44.0	76.2	38.1	104.8	63.5	152.4	88.9	118	16
3	88.90	2.11	3.05	5.49	7.62	76.2	114.30	152.4	228.6	76.2	50.8	85.7	50.8	127.0	63.5	152.4	88.9	130	18
3 1/2	101.60	2.11	3.05	5.74	8.08	88.9	133.35	177.8	266.7	88.9	57.2	95.3	63.5	139.7	76.2	152.4	101.6	140	18
4	114.30	2.11	3.05	6.02	8.56	101.6	152.4	203.2	304.8	101.6	63.5	104.8	63.5	157.2	76.2	152.4	101.6	168	20
5	141.30	2.77	3.40	6.55	9.52	127.0	190.5	254.0	381.0	127.0	82.6	123.8	76.2	185.7	76.2	203.2	127.0	188	25
6	168.27	2.77	3.40	7.11	10.97	152.4	228.6	304.8	457.2	152.4	95.3	142.7	88.9	215.9	88.9	203.2	139.7	215	25
8	219.07	2.77	3.76	8.18	12.7	203.2	304.8	406.4	609.6	203.2	127.0	177.5	101.6	270.0	101.6	203.2	152.4	270	30
10	273.5	3.40	4.19	9.27	12.7	254.0	381.0	508.0	762.0	254.0	158.7	215.9	127.0	324.0	127.0	254.0	177.8	330	35
12	323.85	3.96	4.57	9.52	12.7	304.8	457.2	609.6	914.4	304.8	190.5	254.0	152.4	381.0	152.4	254.0	203.2	400	40
14	355.60	3.96	4.76	9.52	12.7	355.6	533.4	711.2	1066	355.6	222.2	280.0	165.1	412.8	152.4	305.0	330.2	-	-
16	406.40	4.19	4.76	9.52	12.7	406.4	609.6	812.8	1219	406.4	254.0	304.8	177.8	470.0	152.4	305.0	355.6	-	-
18	457.20	4.19	4.76	9.52	12.7	457.2	685.8	914.4	1372	457.2	285.7	343.0	203.2	533.4	152.4	305.0	381.0	-	-
20	508.00	4.76	5.54	9.52	12.7	508.0	762.0	1016	1524	508.0	317.6	381.0	228.6	584.2	152.4	305.0	508.0	-	-
24	609.60	5.54	6.35	9.52	12.7	609.6	914.4	1219	1829	-	381.0	431.8	266.7	698.5	152.4	305.0	508.0	-	-

**STANDARDS :** All dimensions are in mm and confirm to ANSI B 16.9 and MSS SP-43

**RADIUS :** Radius of Short radius Elbows is 1 times nominal Pipe diameter. Radius of Long Radius Elbows is 1-1/2 time regional Pipe diameter.



p.s.steel999@gmail.com



PS Steel SHOP NO. 58, FIRST FLOOR,  
RAGHUSHREE MARKET, AJMERI GATE  
Delhi 110006



www.pssteel.co.in



+91-9819688259, +91-9899412628



## WEIGHT PER SHEET

U.S.A./GROSS BRITAINNE

U.S.A./GRANDE BRETAGNE

U.S.A./GROSS BRITAIN

in kg/per sheet				in kg/m2		in kg/per sheet				in kg/m2	
Thickness in mm	Sizes in mm			Thickness in mm	Weight Kg/m2	Thickness in mm	Sizes in mm			Thickness in mm	Weight Kg/m2
	2000x1000	2500x1250	3000x1500				2000x1000	2500x1250	3000x1500		
0.18	2.88	—	—	0.18	1.44	1.75	28.00	43.75	63.00	1.75	14.00
0.20	3.20	—	—	0.20	1.60	2.00	32.00	50.00	72.00	2.00	16.00
0.22	3.52	—	—	0.22	1.76	2.25	36.00	56.25	81.00	2.25	18.00
0.24	3.84	—	—	0.24	1.92	2.50	40.00	62.50	90.00	2.50	20.00
0.27	4.32	—	—	0.27	2.16	2.75	44.00	68.75	99.00	2.75	22.00
0.28	4.48	—	—	0.28	2.24	3.00	48.00	75.00	108.00	3.00	24.00
0.32	5.12	—	—	0.32	2.56	3.25	52.00	81.25	117.00	3.25	26.00
0.38	6.08	—	—	0.38	3.04	3.50	56.00	87.50	126.00	3.50	28.00
0.44	7.04	—	—	0.44	3.52	3.75	60.00	93.75	135.00	3.75	30.00
0.50	8.00	12.50	—	0.50	4.00	4.00	64.00	100.00	144.00	4.00	32.00
0.56	8.96	14.00	—	0.56	4.43	4.25	68.00	106.25	153.00	4.25	34.00
0.63	10.08	15.75	—	0.63	5.04	4.50	72.00	112.50	162.00	4.50	36.00
0.75	12.00	18.75	—	0.75	6.00	5.00	80.00	125.00	180.00	5.00	40.00
0.88	14.08	22.00	—	0.88	7.04	5.50	88.00	137.50	198.00	5.50	44.00
1.00	16.00	25.00	—	1.00	8.00	6.00	96.00	150.00	216.00	6.00	48.00
1.13	18.08	28.25	—	1.13	9.04	6.50	104.00	162.50	234.00	6.50	52.00
1.25	20.00	31.25	—	1.25	10.00	7.00	112.00	175.00	252.00	7.00	56.00
1.38	22.08	37.50	—	1.38	11.04	7.50	120.00	187.50	270.00	7.50	60.00
1.50	24.00	37.50	54.00	1.50	12.00	8.00	128.00	200.00	288.00	8.00	64.00

## WEIGHT IN FLAT BARS

PER METER IN KG

HIGH SPEED STEEL APP. 10%+

Size mm	10	15	20	25	30	35	40	45	50	55	60	65	70	75	80	85	90	95	100	Size mm
4	0.31	0.47	0.63	0.79	0.94	1.10	1.26	1.41	1.57	1.73	1.88	2.04	2.20	2.36	2.51	2.67	2.83	2.98	3.14	4
5	0.39	0.59	0.79	0.98	1.18	1.37	1.57	1.77	1.96	2.16	2.36	2.55	2.75	2.94	3.14	3.34	3.53	3.73	3.93	5
6	0.47	0.71	0.94	1.18	1.41	1.65	1.88	2.12	2.36	2.59	2.83	3.06	3.30	3.53	3.77	4.00	4.24	4.48	4.71	6
7	0.55	0.82	1.10	1.37	1.65	1.92	2.20	2.47	2.75	3.02	3.30	3.57	3.85	4.12	4.40	4.67	4.95	5.22	5.50	7
8	0.63	0.94	1.26	1.57	1.88	2.20	2.51	2.83	3.14	3.46	3.77	4.08	4.40	4.71	5.02	5.34	5.65	5.97	6.28	8
9	0.71	1.06	1.41	1.77	2.12	2.47	2.83	3.18	3.53	3.89	4.24	4.69	4.95	5.30	5.65	6.01	6.36	6.71	7.07	9
10	0.79	1.18	1.57	1.96	2.36	2.75	3.14	3.53	3.93	4.32	4.71	5.10	5.50	5.89	6.28	6.67	7.07	7.46	7.85	10
11	0.86	1.30	1.73	2.16	2.59	3.02	3.45	3.89	4.32	4.75	5.18	5.61	6.05	6.48	6.91	7.34	7.77	8.20	8.64	11
12	0.94	1.41	1.88	2.36	2.83	3.30	3.77	4.24	4.71	5.18	5.65	6.12	6.59	7.07	7.54	8.01	8.48	8.95	9.42	12



[p.s.steel999@gmail.com](mailto:p.s.steel999@gmail.com)



PS Steel SHOP NO. 58, FIRST FLOOR,  
RAGHUSHREE MARKET, AJMERI GATE  
Delhi 110006



[www.pssteel.co.in](http://www.pssteel.co.in)



+91-9819688259, +91-9899412628

## SPECIAL FORMULA

1. **WEIGHT OF STAINLESS STEEL SHEET PLATE**  
Length x Width x Thickness x .000008 = Weight in Kg.
2. **WEIGHT OF STAINLESS STEEL PIPES & TUBES (IN KG)**  
OD - Thick x Thick. 00756 = Weight Per ft.
3. **WEIGHT OF STAINLESS STEEL ROUND (IN KG)**  
Diameter x Diameter x .0019 = Weight Per ft.
4. **WEIGHT OF STAINLESS STEEL HEX (IN KG)**  
Diameter x Diameter x .0021 = Weight Per ft.
5. **WEIGHT OF STAINLESS STEEL SQUARE (IN KG)**  
Diameter x Diameter x .0025 = Weight Per ft.
6. **WEIGHT OF STAINLESS STEEL CIRCLE (IN KG)**  
Diameter x Diameter x thickness  $\div$  = 160000 W.P. Nos
7. **WEIGHT OF STAINLESS STEEL FLAT (IN KG)**  
Width x Thickness x .0024 = Weight Per ft.
8. **WEIGHT OF STAINLESS STEEL MATERIAL  $\div$  3 = ALUMINIUM MATERIAL**
9. **WEIGHT OF STAINLESS STEEL MATERIAL X 9% = BRASS MATERIAL**
10. **WEIGHT OF STAINLESS STEEL MATERIAL X 12% = COPPER MATERIAL**
11. **MAKING OF PIPE FROM SHEET OR PLATE**  
OD - Thick. 3.14 = Width of Sheet or Plate
12.
 

1 MTR = 3.2828 FT.	1 UK GAL = 4.55 LITRES
1 FL = 304.8 MM	1 US GAL = 3.78 LITRES
1 INCH = 25.4 MM	1 KG/CM2 = 14.22 LB/IN <sup>2</sup>
1 ACRE = 4047 M2	1 TON = 1016 KG.
1 BARREL = 159 LITRES	1 CUFT = 35.4 M3



[p.s.steel999@gmail.com](mailto:p.s.steel999@gmail.com)



PS Steel SHOP NO. 58, FIRST FLOOR,  
RAGHUSHREE MARKET, AJMERI GATE  
Delhi 110006



[www.pssteel.co.in](http://www.pssteel.co.in)



+91-9819688259, +91-9899412628





## APPLICATION INDUSTRIES

- Chemical Industries
- Paper & Pulp Mills
- Sugar Industries
- Atomic Energy
- Water Piping System
- Beverage Industries
- Food Industries
- Engineering / Shipyard
- Pharmacy Industries
- Oil & Gas Industries
- Textile Industries
- Nuclear Energy/Thermal
- Cement Industries
- Refinery / Petrochemical



[p.s.steel999@gmail.com](mailto:p.s.steel999@gmail.com)



[www.pssteel.co.in](http://www.pssteel.co.in)



PS Steel SHOP NO. 58, FIRST FLOOR,  
RAGHUSHREE MARKET, AJMERI GATE  
Delhi 110006



+91-9819688259, +91-9899412628

